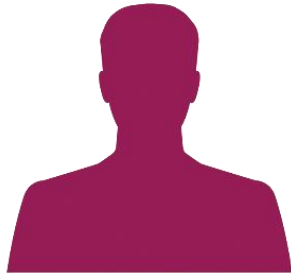


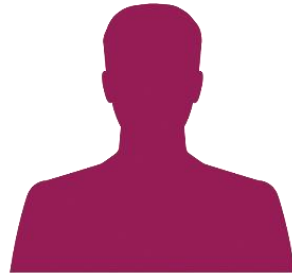
Customer Security Programme

Stephen Gilderdale, Head of Customer Security Programme, SWIFT



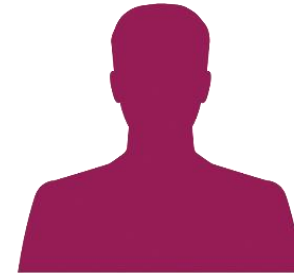
Stephen Gilderdale

Head of CSP
SWIFT



Adrian Nish

Head of Cyber Threat
Intelligence
BAE Systems



Todd Inskeep

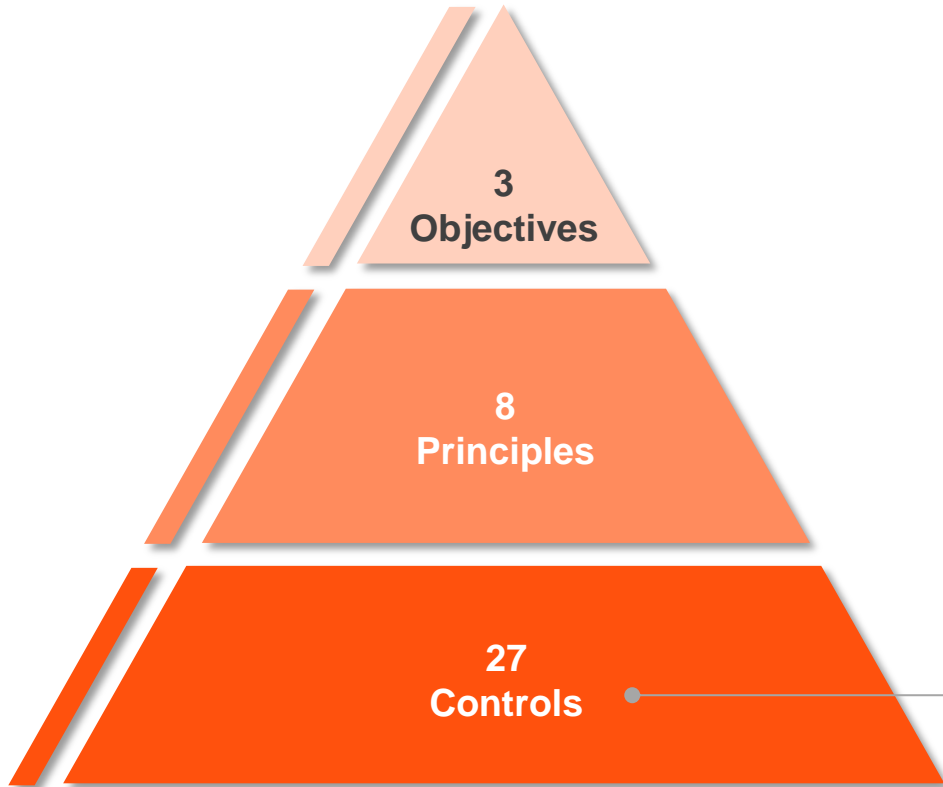
Director, Commercial
Information Security
Booz Allen Hamilton

CSP | Framework



CSP | Controls

Security Controls



CSP Security Controls Framework

Secure Your Environment

1. Restrict Internet access
2. Segregate critical systems from general IT environment
3. Reduce attack surface and vulnerabilities
4. Physically secure the environment

Know and Limit Access

5. Prevent compromise of credentials
6. Manage identities and segregate privileges

Detect and Respond

7. Detect anomalous activity to system or transaction records
8. Plan for incident response and information sharing

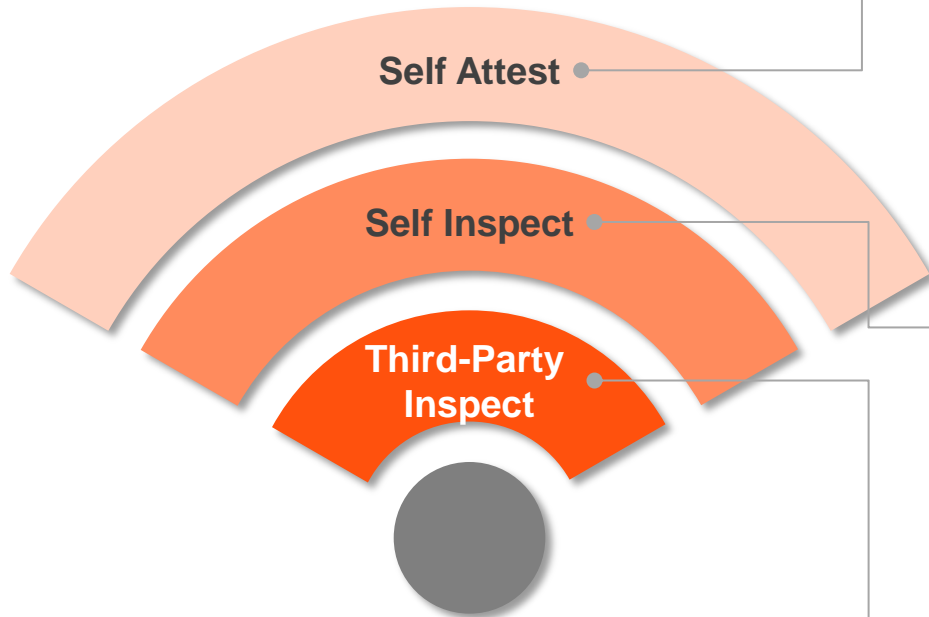
- Applicable to all customers and to the whole end-to-end transaction chain beyond the SWIFT local infrastructure
- Mapped against recognised international standards – NIST, PCI-DSS and ISO 27002
- Some controls are mandatory, some are advisory
- Documentation and collateral will be available by end of October

CSP | Framework



CSP | Security Assurance

Assurance Framework



Self-Attestation

- Where customer positively asserts that it meets the security requirements
- First- and second-line of defence – provided by senior management

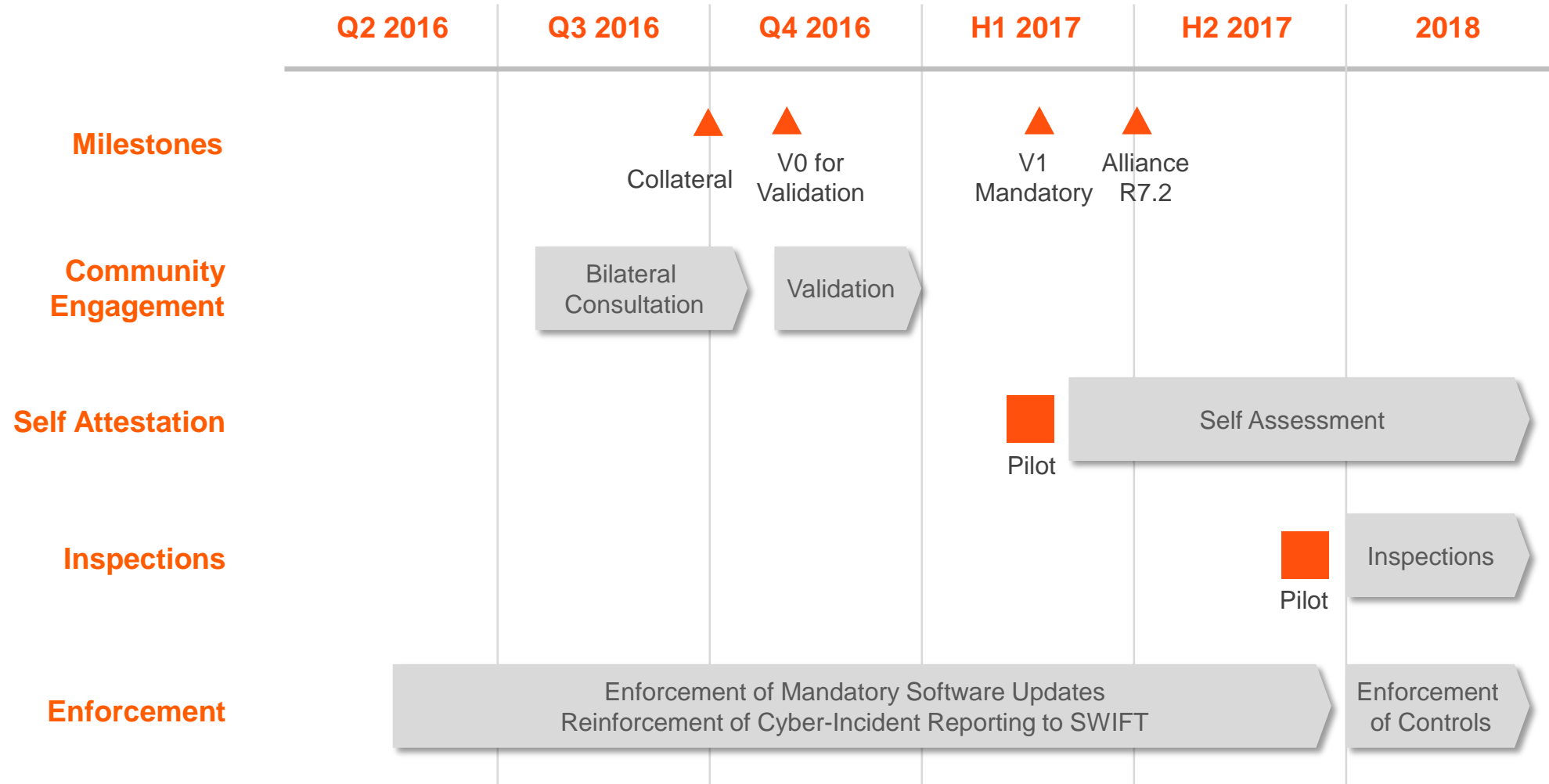
Self-Inspection

- Where customer's Internal Audit asserts that the customer meets the security requirements
- Third-line of defence - provided by IA function

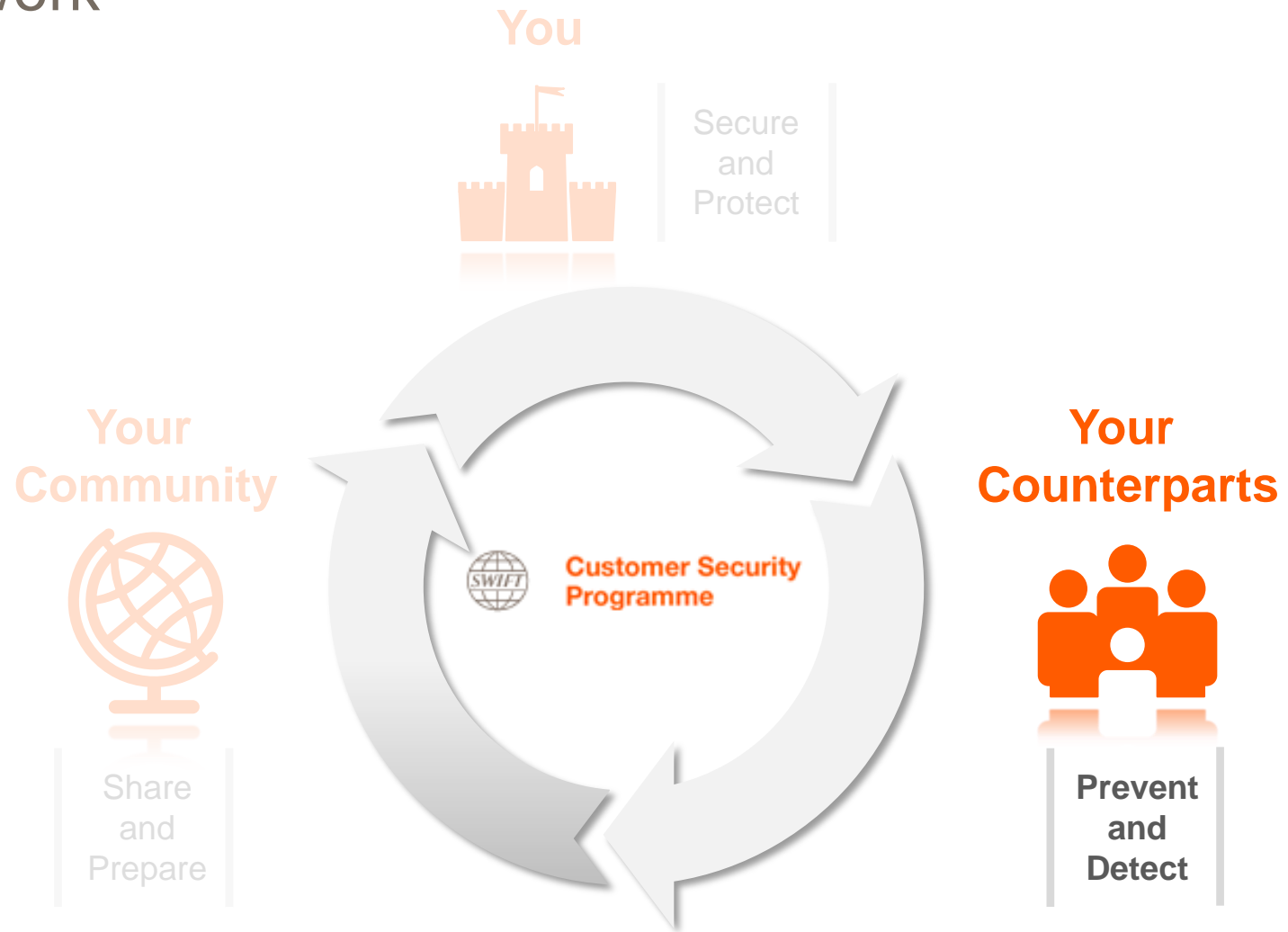
Third-Party Inspection

- For an external party that provides independent validation that the customer meets the security requirements

CSP | Timeline



CSP | Framework



CSP | Daily Validation Report



Daily Validation Report

Documentation & Support
BICXXABC Daily Period: 20160901

Activity Reports

Deep dive into your daily payments activity

[view outbound dashboard >>](#)
[view inbound dashboard >>](#)

Message type	Currency	Largest Transaction (conv. USD)	Top largest transactions
MT103	USD	25,000,000	1
	GBP	658,250	2
	EUR	316,694	3
	CAD	88,553	4
	CHF	48,080	5
MT202	JPY	256,073,034	1
	USD	119,000,000	2
	GBP	65,825,000	3
	EUR	38,764,250	4
	CAD	34,204,926	5

Risk Reports

Analyze your daily payments activity

[view outbound dashboard >>](#)
[view inbound dashboard >>](#)

Ordering Country	Sender BIC8	Receiver BIC8	Beneficiary Country	Net Amount (conv. USD)
Germany	BICAAAA	BICXXXX	United Kingdom	6,411,807
Germany	BICBBBB	BICYYYY	United Kingdom	36,789

Activity Reports | Aggregate Daily Activity

- Message type
- Currency
- Country
- Counterparties
- Daily volume total
- Daily value total
- Maximum value of single transactions
- Comparisons to daily volume and value averages

Risk Reports | Large or Unusual Message Flows Based on Ordered Lists

- Largest single transactions
- Largest aggregate transactions for counterparties
- New counterparty relationships

CSP | Action

You



- Secure your local environment
- Sign up to our Security Notification Service
- Stay up to date with SWIFT's latest security updates
- Get ready to adopt our new security requirements

Your Community



- Inform SWIFT if you suspect that you have been compromised
- Provide contact details of your company's CISO for incident escalation

Your Counterparts



- 'Clean-up' your RMA relationships
- Put in place fraud detection measures
- Engage with us on market practice





www.swift.com